



## TECHNICAL RIDER

This rider is a part of the contract (V12-2021)

### SOUND FOH (p 2-3)

- **Stereo system** (type Nexo, Adamson) with paired subs, and processing, able to provide a SPL of 105dBA. Line array appreciated, delayed line if needed (big venue for ex.).
- **Surround system**: in addition to the main stereo system, we need 4 independent speakers points (see p2 for setup plot) around the audience, with selectable height and possible tilt from the frame. At least at 3m from the 1<sup>st</sup> seat. Please contact Romain to confirm all placements. For example, 4 PS15R2 are ok for approximately 300 people in the audience.
- *Digital console (Behringer wing + Stage rack provided if transport prevented in the contract) (Please provide us with a table for our mixing desk: 1,6m/ 0,6m, H approx. 0,5m)*
- **2 RJ 45 Cat 5E from FOH to middle stage (Less of 70 meters)**
- *3 IEM with preamps and volume control provided (if transport prevented in the contract)*
- *Computer + Cubase dongle + reverb rack + player provided*
- Power: French mono 230V 16A for the sound on stage and at the mixing desk.
- Audio console has to be in the axes of the stage, at the **exact middle of the audience**. (Never in a closed control room or under a balcony).
- 3 Wireless pocket systems type shure UR4DJ5E with new battery and 2 dpa adapters
- Around 30 xlr for stage + 3 x 15m xlr for our wired IEM + Multi 16A connections

### Soundcheck

At the time of our arrival, the local crew must be present. All the equipments must be placed, wired and ready to be used. The soundcheck takes around 2 hours without set up (approx. 2h if all is ready at our arrival).

### Light (p 4-7)

- 8 Mac Aura & décoration are provided by the band. We need 1h for the focus and:
- Desk : grandma 2 light
- 11 découpes 2kW (11 with 201 + 11 gobo holders)
- 13 pc 1kW (6 with 201, 7 empty)
- 8 fresnels 1kW (3 with 201, 5 libres) (Or 8 PC1kW (3 with 201, 5 empty)
- 6 stands type manfrotto for pc and fresnel
- 5 floor embases for découpes and fresnel
- Fog machine on stage left + fan

### Team to provide

1 Sound engineer FOH, 1 Light engineer.

### Misc

- Stage min: 8 m per 4 m
- System to keep all our material (Stage and FOH) safe from sun and rain.
- 1 Table 1m20 by 0,6m and 0,8m height for our merchandising stand.

### Catering

- Bottles of still water & black towels on stage.
- Lunch and catering for 5 (1 without seafood)
- Fresh fruits & beer

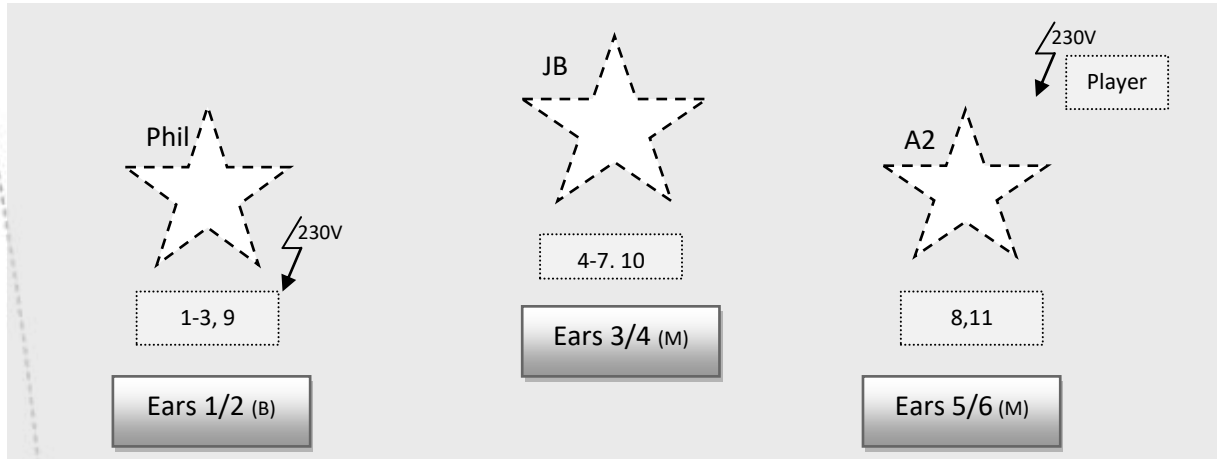
### Contact

Booking : JB Juszcak -- + 33(0)678080761 -- [runnynoise@studionac.fr](mailto:runnynoise@studionac.fr)  
Sound : Romain Muller -- +33(0)607101813 -- [romainmuller68@hotmail.fr](mailto:romainmuller68@hotmail.fr)  
Light : Loïc Hollender -- +33(0)633486241 -- [hollender.loic@gmail.com](mailto:hollender.loic@gmail.com)  
Website : [www.runnynoise.com](http://www.runnynoise.com)

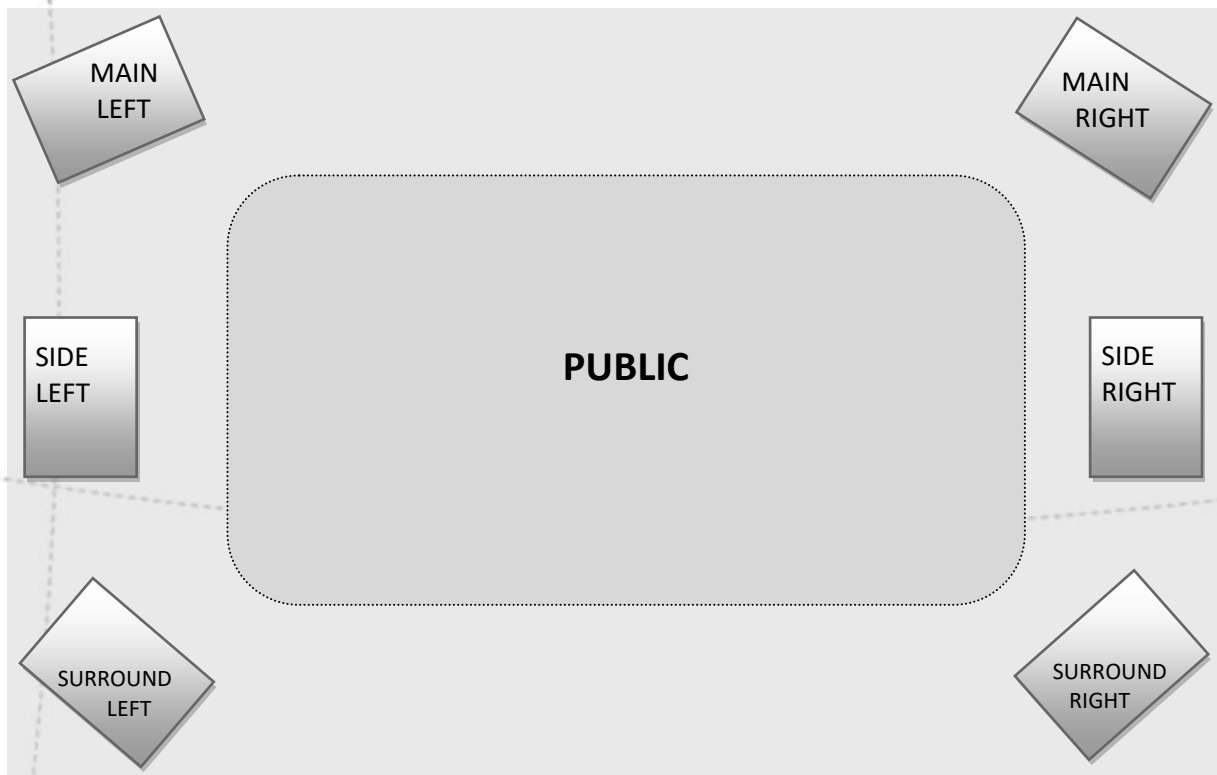
**For any questions or adaptation, please, feel free to contact us**



## STAGE PLOT



## AUDIENCE - SURROUND SYSTEM



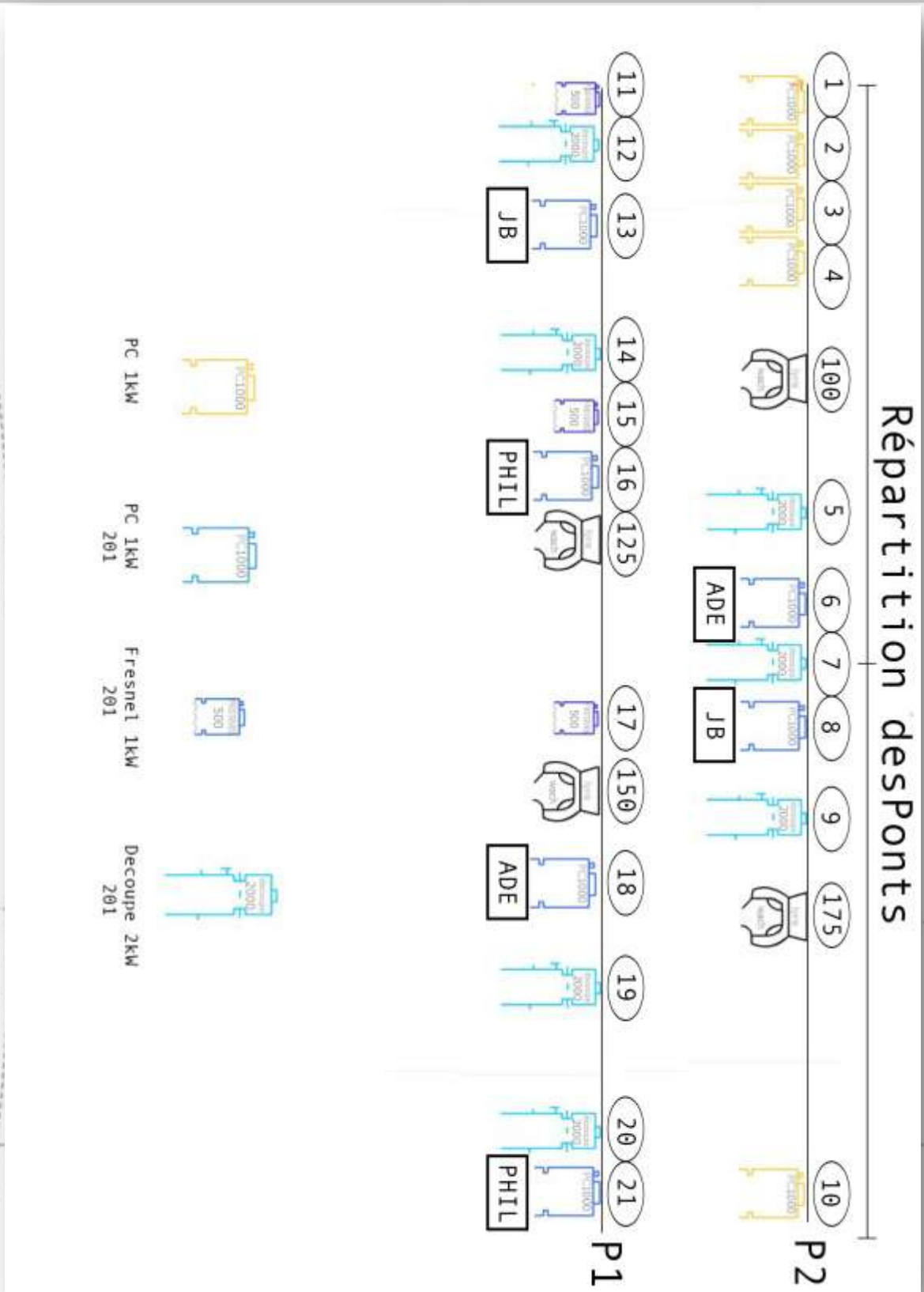


## INPUT PATCH

Num	Instruments	Micro	Mic stand
1	Phil CB DI	Radial J48	x
2	Phil CB Mic	DPA 4099	Clamp
3	Phil Bass DI	Provided	x
4	JB GUIT DI	Radial JDI	x
5	JB SAX Bary Clefs	INTRAMIC+ BSS AR133 + HF (Sennheiser : -27db / Shure : -3)	Clamp
6	JB SAX Bary Pav	DPA 4099 + HF (Sennheiser : -27db / Shure : -3)	Clamp
7	JB SAX Alto	DPA 4099+ HF (Sennheiser : -27db / Shure : -3)	Clamp
8	A2 Flute	DPA 4099	Clamp
9	Vox Phil	KSM9	Tall
10	Vox JB	KMS 105	Tall
11	Vox A2	B 87A	Tall
12			
13			
14			
15			
16			
31	Amb L	Oktava	
32	Amb R	Oktava	
	PC L (Daw17)		
	PC R (Daw18)		
	PC Side L (Daw19)		
	PC Side R (Daw20)		
	PC Sur L (Daw21)		
	PC Sur R (Daw22)		
	MON L (Daw23)		
	MON R (Daw24)		
	TB ON STAGE	SM58 SE	
	TB	Sm 58	
		Ref mic	Small

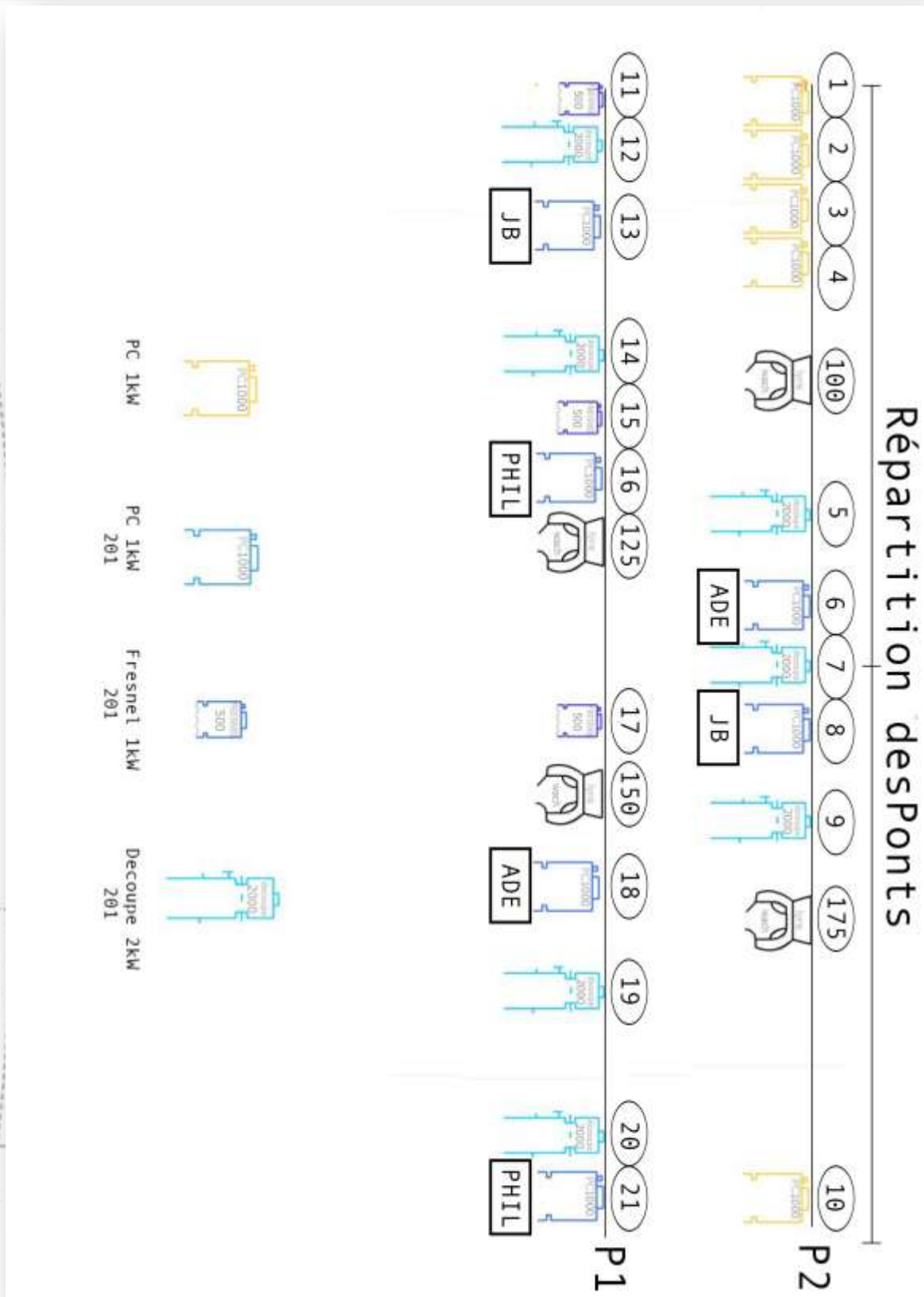
GREY : May be provided by the band if transport prevented in the contract

## LIGHT PLOT (GRILL)





## LIGHT PLOT (FLOOR)





## FOCUS (1/2)

LIGNE	PROJECTEUR	CIBLE	SPECIFICITE	GELAT	GOBO
PONT 2					
1	PC 1kW	Arroser tout le plateau	Ouvert	-	
2	PC 1kW		Ouvert	-	
3	PC 1kW		Ouvert	-	
4	PC 1kW		Ouvert	-	
5	Découpe 2kW	Plateau	Ouvert Max	201	Points
6	PC 1kW	Adeline	Serré	201	
7	Découpe 2kW	Public	Ouvert Max	201	Points
8	PC 1kW	JB	Serré	201	
9	Découpe 2kW	Plateau	Ouvert Max	201	Points
10	PC 1kW	Plateau	Ouvert	-	
PONT 1					
11	Fresnel 1kW/ PC 1kW	Phillip	Serré	201	
12	Découpe 2kW	Plateau	Ouvert Max	201	Points
13	PC 1kW	JB	Serré	201	
14	Découpe 2kW	Public	Ouvert Max	201	Points
15	Fresnel 1kW/ PC 1kW	JB	Serré	201	
16	PC 1kW	Phillip	Serré	201	
17	Fresnel 1kW/ PC 1kW	Adeline	Serré	201	
18	PC 1kW	Adeline	Serré	201	
19	Découpe 2kW	Public	Ouvert Max	201	Points
20	Découpe 2kW	Plateau	Ouvert Max	201	Points
21	PC 1kW	Phillip	Serré	201	
LATERAUX					
22	PC 1kW	Visages	Sur Pied	-	
23	Fresnel 1kW/ PC 1kW	Plateau	Ouvert Sur Pied	-	
24	Fresnel 1kW/ PC 1kW	Plateau	Ouvert Sur Pied	-	
25	PC 1kW	Visages	Sur Pied	-	
26	Fresnel 1kW/ PC 1kW	Plateau	Ouvert Sur Pied	-	
27	Fresnel 1kW/ PC 1kW	Plateau	Ouvert Sur Pied	-	



## FOCUS (2/2)

LIGNE	PROJECTEUR	CIBLE	SPECIFICITE	GELAT	GOBO
CONTRE SOL					
28	Découpe 2kW	Haut	Ouvert Max Sur platine de sol	201	Points
29	Découpe 2kW	Haut	Ouvert Max Sur platine de sol	201	Points
30	Découpe 2kW	Haut	Ouvert Max Sur platine de sol	201	Points
31	Découpe 2kW	Haut	Ouvert Max Sur platine de sol	201	Points
PLATEAU					
32	Fresnel 1kW/ PC 1kW	Haut	Placé dans le coffre Sur platine de sol	-	
33	Lampes apportées décoration				
34	Lampes apportées décoration				
35	Lampes apportées décoration				
36	Lampes apportées décoration				

